

Brabender Screw Feeder DSR67

The Brabender DSR67 screw feeder is capable of reliably and accurately metering bulk ingredients at medium feed rates.

The feeder has the following main components: a stainless steel screw trough, a horizontal stirring agitator in the screw trough, a 3 phase AC agitator motor, a feed screw, a feed screw tube, a 3 phase AC gear motor driving the screw and an extension hopper for ingredient storage.

Extension hoppers are available with 35 dm³ (1.2 ft³), 60 dm³ (2.1 ft³) or 110 dm³ (3.9 ft³) volume.

These components work together to provide mass flow of ingredient and consistent screw filling since the stirring agitator mixes the ingredient, prevents bridging and promotes ingredient flow into the screw.

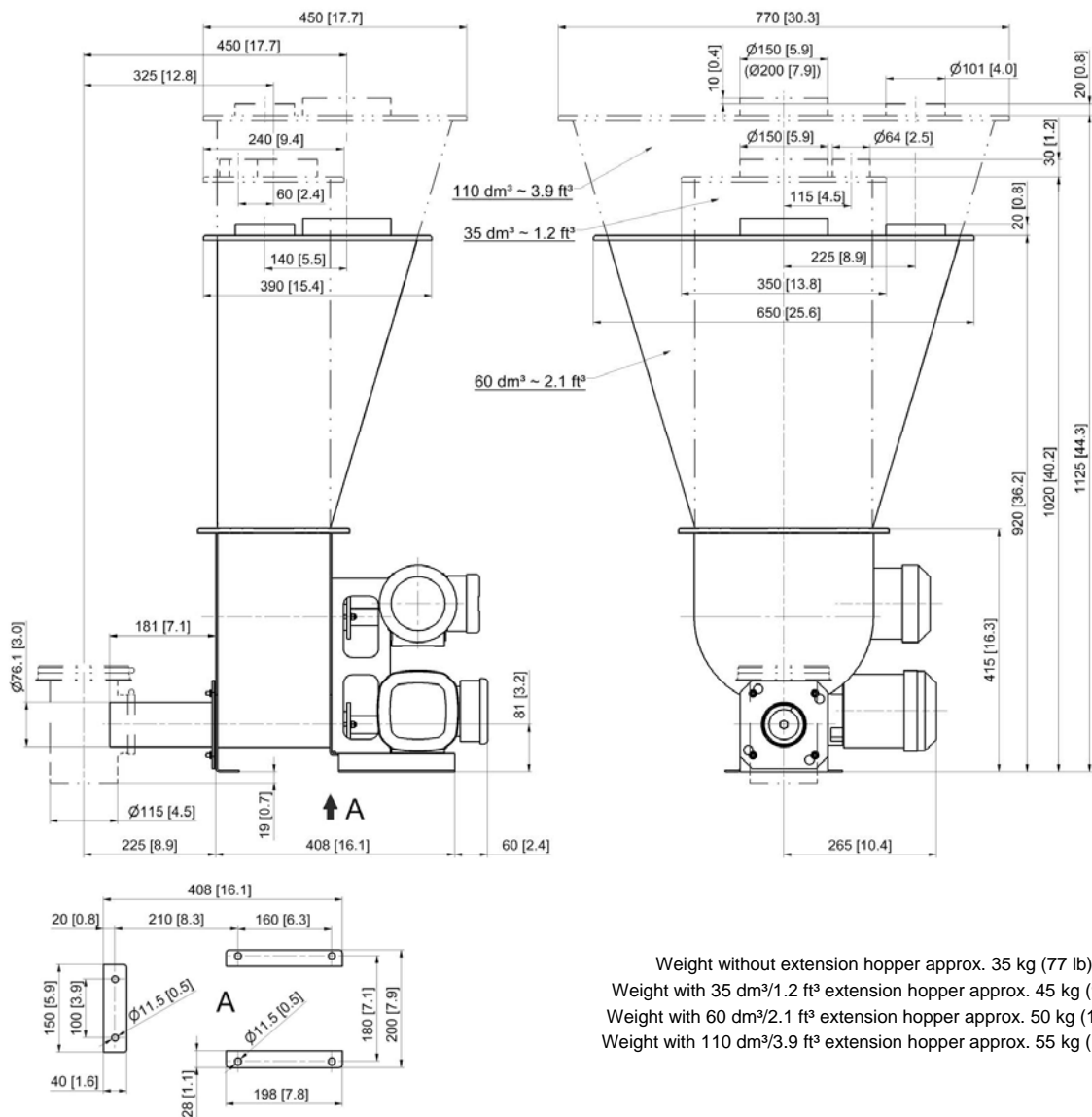
Other advantages of the DSR67 screw feeder are that it is easily disassembled

for cleaning and that it permits easy exchange of feed screws.

Options include a scale to allow gravimetric loss-in-weight feeding, interchangeable screws and hopper covers.

Ingredient contact steel parts are made of stainless steel. Mild steel parts are painted light grey (RAL 7035).

The feeder conforms to CE directives.



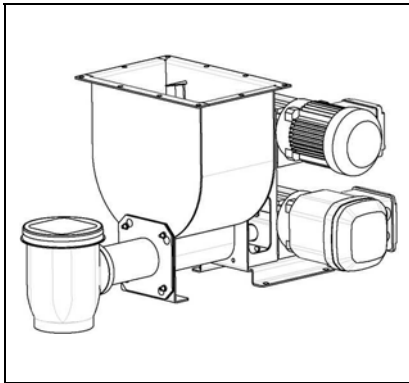
Dimensions in mm (in)

Technical Data

Available screw sizes and feed rates

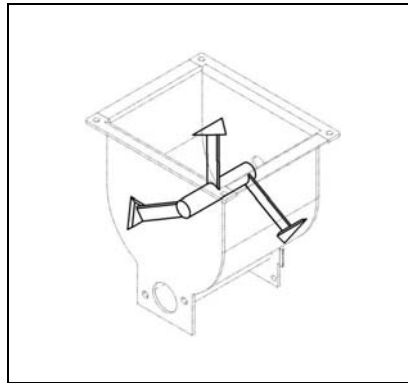
Screw Type	Ø (mm) x p (mm)	Tube designation	Tube dia. (mm)	Max. speed (rpm)	Max. feed rate (dm ³ /hr)*	Max. feed rate (ft ³ /hr)*
Spiral Screw (S)	S 28/22	320	38.0 x 3.0	168 (270) / 100Hz	118 (189)	4.2 (6.7)
	S 28/35	320	38.0 x 3.0	168 (270) / 100Hz	197 (317)	7.0 (11.2)
	S 33/35	350	38.0 x 1.5	168 (270) / 100Hz	268 (431)	9.5 (15.2)
	S 43/27	443	48.3 x 2.0	168 (270) / 100Hz	322 (518)	11.4 (18.3)
	S 43/42	443	48.3 x 2.0	168 (270) / 100Hz	539 (866)	19.0 (30.6)
	S 52/39	563	60.3 x 2.0	168 (270) / 100Hz	696 (1119)	24.6 (39.5)
	S 52/62	563	60.3 x 2.0	168 (270) / 100Hz	1180 (1897)	41.7 (67.0)
	S 67/45	715	76.1 x 2.3	168 (270) / 100Hz	1413 (2271)	49.9 (80.2)
	S 67/71	715	76.1 x 2.3	168 (270) / 100Hz	2329 (3743)	82.3 (132.2)
Blade Screw (B)	B 50/45	563	60.3 x 2.0	168 (270) / 100Hz	676 (1087)	23.9 (38.4)
	B 50/70	563	60.3 x 2.0	168 (270) / 100Hz	1085 (1744)	38.3 (61.6)
Pellet Screw (S)	S 28/22	443	48.3 x 2.0	168 (270) / 100Hz	209 (335)	7.4 (11.8)
	S 28/35	443	48.3 x 2.0	168 (270) / 100Hz	342 (549)	12.1 (19.4)
	S 33/35	443	48.3 x 2.0	168 (270) / 100Hz	381 (612)	13.4 (21.6)
	S 43/27	563	60.3 x 2.0	168 (270) / 100Hz	454 (729)	16.0 (25.8)
	S 43/42	563	60.3 x 2.0	168 (270) / 100Hz	744 (1195)	26.3 (42.2)
	S 52/39	715	76.1 x 2.3	168 (270) / 100Hz	1039 (1669)	36.7 (58.9)
	S 52/62	715	76.1 x 2.3	168 (270) / 100Hz	1725 (2772)	60.9 (97.9)

* Theoretical values at 100% screw filling level and motor speed. Depending on the flow characteristics the screw filling level may decrease to 50%.
Values in brackets refer to optional motor 270 rpm/100 Hz.



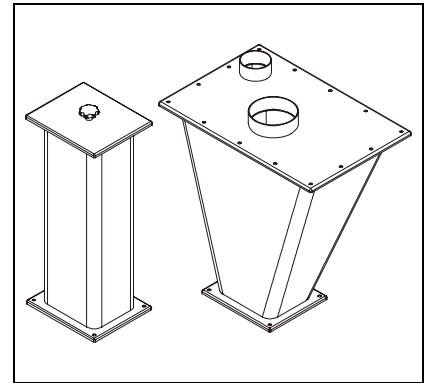
Screw Feeder DSR67

- Stainless steel housing
- Exchangeable screw
- Screw trough with stirring agitator
- Variable frequency driven 3 phase AC gear motor (0.37 kW, 230/400 V, IP65, TEFC), screw speed max. 168 rpm/100 Hz (optional 270 rpm/100 Hz)
- Ingredient contact surfaces are stainless steel SS 1.4301 (304), vertical downspout and blade screws are polyurethane



Multifunctional Agitator

- Multifunctional stirring agitator
 - Mixes the bulk ingredient
 - Prevents bridging and ratholing
 - Promotes ingredient mass flow
 - Ensures consistent screw filling
 - Stainless steel SS 1.4301 (304)
- Driven by a separate 3 phase AC motor (0.12 kW, 230/400 V, IP65, TEFC), agitator speed 12 rpm/50 Hz



Extension Hoppers

- Extension hoppers
 - 35 dm³ (1.2 ft³), straight walled
 - 60 dm³ (2.1 ft³), steep sided
 - 110 dm³ (3.9 ft³), steep sided
- Cover with inlet pipe and vent pipe for automatic refill, or
- Lift off cover with handle for manual refill
- Stainless steel SS 1.4301 (304)

Accessories

- Flexible connections
- Exchange screws and screw tubes
- Screw extension 200 mm / 7.8 in (not available for blade screws)
- Blade screws SS 1.4305 (303) instead of PUR
- Safety grate for manual refill
- Screw speed monitoring system

Options

- Screw tube without vertical downspout
- Explosion-proof designs
- Gravimetric loss-in-weight feeder with scale MD5, MD6, MS5 or MS6 (see separate Works Standards)

Frequency Converters

Frequency converter FC-B1 for wall mounting, or frequency converter FC-V1.1 for control cabinet installation (see separate Works Standards), or Allen Bradley Powerflex 40 variable frequency drive (North America only)



Modifications reserved. All data describe our products in a general manner. They are no agreement on or warranty of characteristics in the sense of § 434 or guarantee in the sense of § 443 of the German Civil Code or similar regulations and effect no liability.

Issue 7.0 (July 13)
Supersedes 5.0 (May 12)